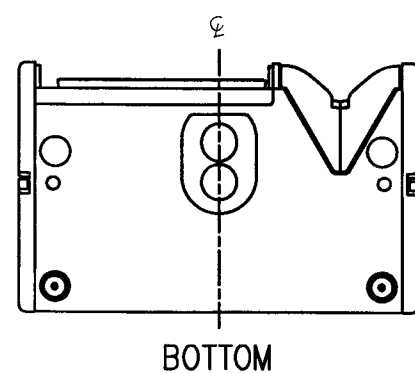
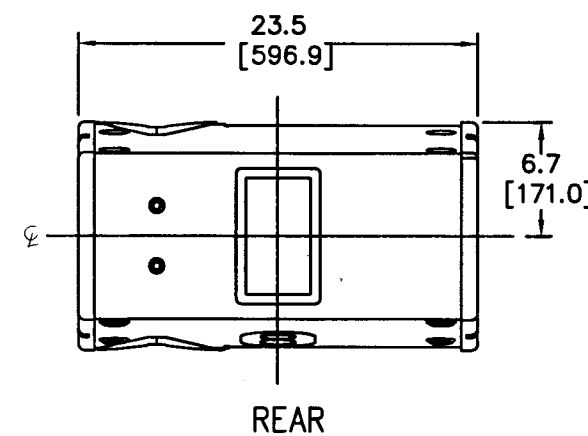
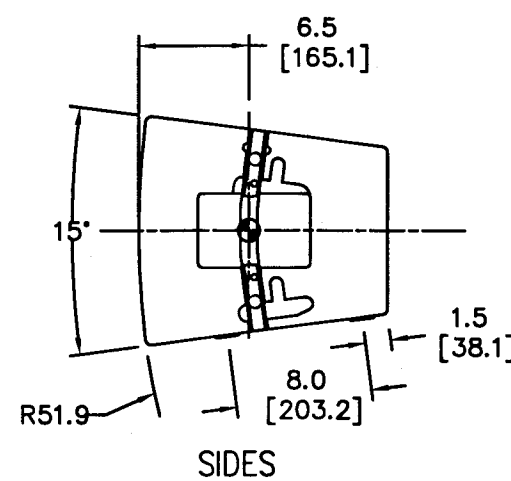
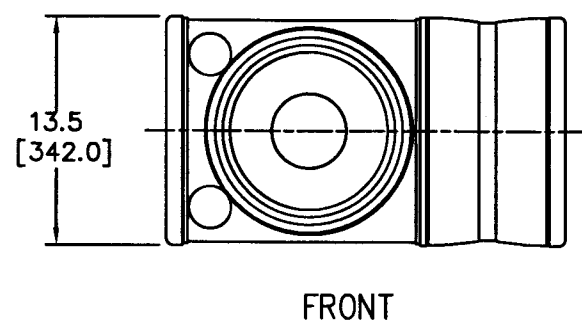
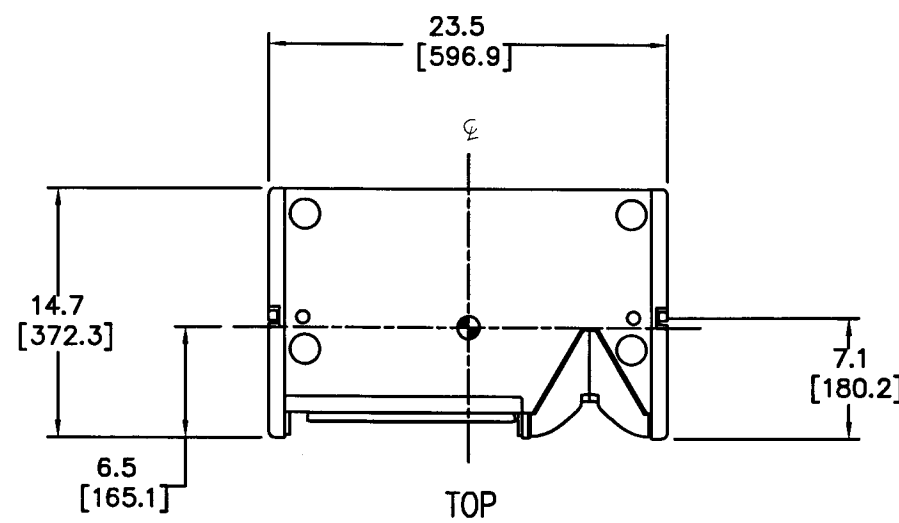


THESE DRAWINGS AND SPECIFICATIONS ARE THE PROPERTY OF JBL INCORPORATED. THEY ARE ISSUED IN STRICT CONFIDENCE AND SHALL NOT BE REPRODUCED OR USED AS THE BASIS FOR MANUFACTURE OR APPARATUS WITHOUT WRITTEN PERMISSION.

ALL MATERIAL SPECIFIED ON THIS DRAWING SHALL COMPLY WITH EUROPEAN DIRECTIVE 2002/95/EC. **RoHS**

REVISIONS						
CHG	LTR	DESCRIPTION	DRFT	D.C.	DATE	APPR
34742	A	RELEASE TO MARKETING	TH	(A)		Bu

8/1/07 8/1/07



1. COMPONENTS: LF - 1X 2262HPL; HF - 3X 2408J.

2. INPUT CONNECTORS: NL4 SPEAKON WITH LOOP THRU. CONFIGURATION: BI-AMP/PASSIVE SWITCHABLE BY EXTERNAL SLIDE SWITCH. HF LEVE ADJUSTMENT +3/0/-3 dB BY EXTERNAL SLIDE SWITCH.

3. GRILL: 16 GA. PERFORATED CRS, POWDER COATED BLACK WITH BLACK FOAM BACKING.

4. MATERIALS: 16MM (5/8") FINNISH BIRCH PLYWOOD.

5. FINISH: BLACK DURAFLEX (WHITE AVAILABLE)

NOTES: (UNLESS OTHERWISE SPECIFIED)

6. POLE MOUNT 35mm (1-3/8") FEMALE SOCKET, 0° AND 15° AIMING ANGLES.

7. WHITE (-WH) MODEL DOES NOT INCLUDE HANDLE OR POLE MOUNT.

8. RIGGING SYSTEM: INTEGRATED RIGGING HARDWARE TO CONNECT MULTIPLE VRX932LA ENCLOSURES, VRX918S SUBWOOFERS AND ACCESSORY ARRAY FRAME.

9. WEIGHT: 20.9 Kg (46 LBS).

10. CENTER OF GRAVITY (CG)

# TOLERANCES (UNLESS OTHERWISE SPECIFIED)

XXX ± .063 INCH

XX ± .125 INCH

ANGULAR TOLERANCE OF 0°±30'

FRACTIONAL DIMENSIONS ± 1/32

• DIMENSIONS ARE INCHES

• ALL DIMENSIONS ARE FINISHED DIMENSIONS

• DO NOT SCALE DRAWING



JBL PROFESSIONAL  
A Harman International Company  
Northridge, California 91329 U.S.A.

TITLE

CUSTOMER DRAWING: VRX932LA-1

SIZE

A

DRAWING NO.

364650

REV

A

SCALE NTS

SHEET 1 OF 1